

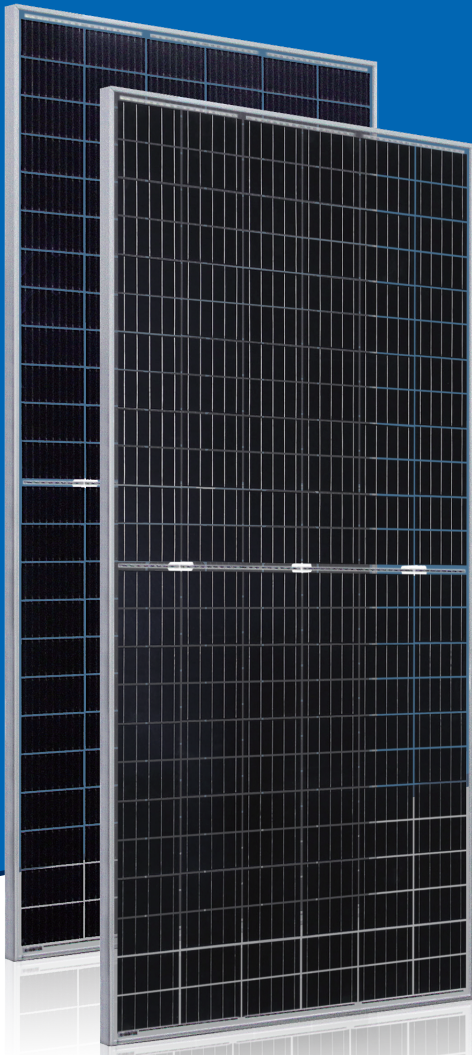
AstroTwins™

Enjoy the Energy of the Universe

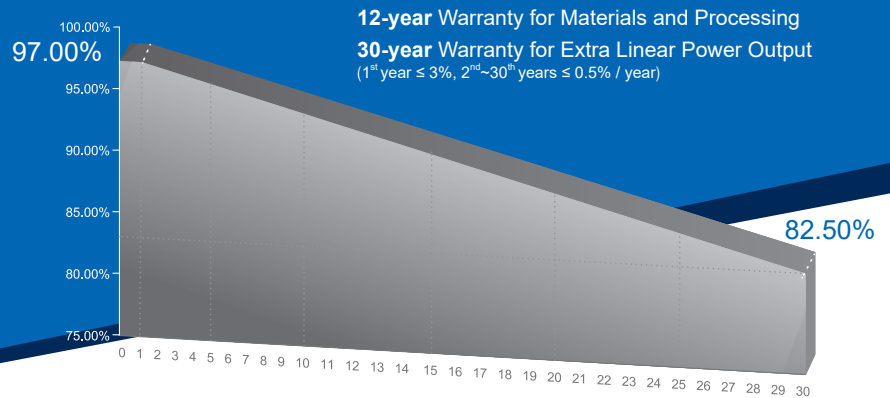
380W~400W

P-type Monocrystalline PV Module
CHSM72M(DGT)/F-BH Series

CHSM72M(DGT)/F-BH is bifacial module with transparent encapsulant material



Multi-Busbar Module could be the option



KEY FEATURES



ENHANCED FIRE PERFORMANCE
Fire Class A certified according to IEC standard.



EXCELLENT WEATHER RESISTANCE
Reduces the cell micro-crack and extended product warranty.



BIFACIAL POWER
The backside makes use of the reflected and scattered light from the surroundings, the modules can yield up to 5%~30% power more, depending on the albedo.



REDUCE INTERNAL MISMATCH LOSS
Reduces mismatch loss and improves output.



APPLICABLE FOR MULTI DIFFERENT ENVIRONMENTS
The wide range of applications, such as BIPV, vertical installation, snow area, high humidity area and strong sandstorm area, etc.



SNAIL TRAIL RESISTANCE
Reduces the probability of snail trails with zero water vapor transmittance.



FRAMED DOUBLE GLASS STRUCTURE
Similar to conventional modules design, better correspond with installation requirements in current market.

COMPREHENSIVE CERTIFICATES



First solar company which passed the TUV Nord IEC/TS 62941 certification audit.

Preliminary
For Global Market



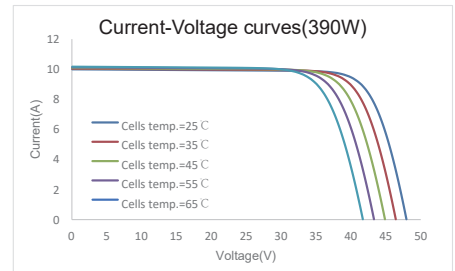
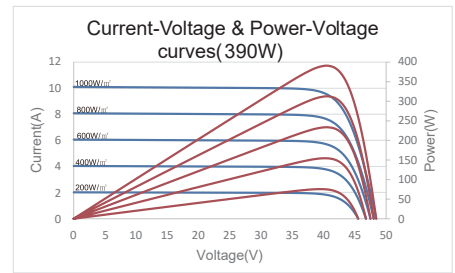
ASTROENERGY
A CHNT COMPANY

ELECTRICAL SPECIFICATIONS

Power rating (front)	380 Wp		385 Wp		390 Wp		395 Wp		400 Wp	
Testing Condition	Front	Back	Front	Back	Front	Back	Front	Back	Front	Back
STC rated output (P_{mpp}/Wp)*	380	285	385	289	390	293	395	296	400	300
Rated voltage (V_{mpp}/V) at STC	40.00	40.54	40.23	40.77	40.46	41.01	40.69	41.24	40.92	41.47
Rated current (I_{mpp}/A) at STC	9.50	7.03	9.57	7.08	9.64	7.13	9.71	7.19	9.78	7.24
Open circuit voltage (V_{oc}/V) at STC	47.62	46.19	47.80	46.37	47.98	46.54	48.16	46.72	48.34	46.89
Short circuit current (I_{sc}/A) at STC	9.97	7.38	10.05	7.44	10.13	7.50	10.21	7.56	10.29	7.61
Module efficiency	18.5%	13.8%	18.7%	14.0%	18.9%	14.2%	19.2%	14.4%	19.4%	14.6%
Temperature coefficient (P_{mpp})					- 0.3528%/°C					
Temperature coefficient (I_{sc})					+0.0400%/°C					
Temperature coefficient (V_{oc})					- 0.2769%/°C					
Normal operating cell temperature (NOCT)					44±2°C					
Maximum system voltage (IEC/UL)					1500V _{DC}					
Number of diodes					3					
Junction box IP rating					IP 68					
Maximum series fuse rating					20 A					

* Measurement tolerance +/- 3%
STC: Irradiance 1000W/m², Cell Temperature 25°C, AM=1.5

CURVE



ELECTRICAL SPECIFICATIONS (Integrated power)

P_{mpp} gain	P_{mpp}	V_{mpp}	I_{mpp}	V_{oc}	I_{sc}
5%	410 Wp	40.46 V	10.12 A	47.98 V	10.64 A
10%	429 Wp	40.46 V	10.60 A	47.98 V	11.14 A
15%	449 Wp	40.36 V	11.11 A	48.08 V	11.65 A
20%	468 Wp	40.36 V	11.60 A	48.08 V	12.16 A
25%	488 Wp	40.36 V	12.08 A	48.08 V	12.66 A

Measurement tolerance +/- 3%
Electrical characteristics with different rear power gain (reference to 390W)

MECHANICAL SPECIFICATIONS

Outer dimensions (L x W x H)	2038 x 1010 x 30 mm 80.24 x 39.76 x 1.18 in
Module composition	Glass / POE / Glass
Front glass thickness	2.5 mm / 0.098 in
Cable length (IEC/UL)	Portrait: 350 mm (13.78 in) Landscape: 1200 mm (47.24 in)
Cable diameter (IEC/UL)	4 mm ² / 12 AWG
① Maximum mechanical test load	6000 Pa (front) / 3600 Pa (back)
Fire performance (IEC/UL)	Class A (IEC) or Type 3 (UL)
Connector type (IEC/UL)	MC4 compatible

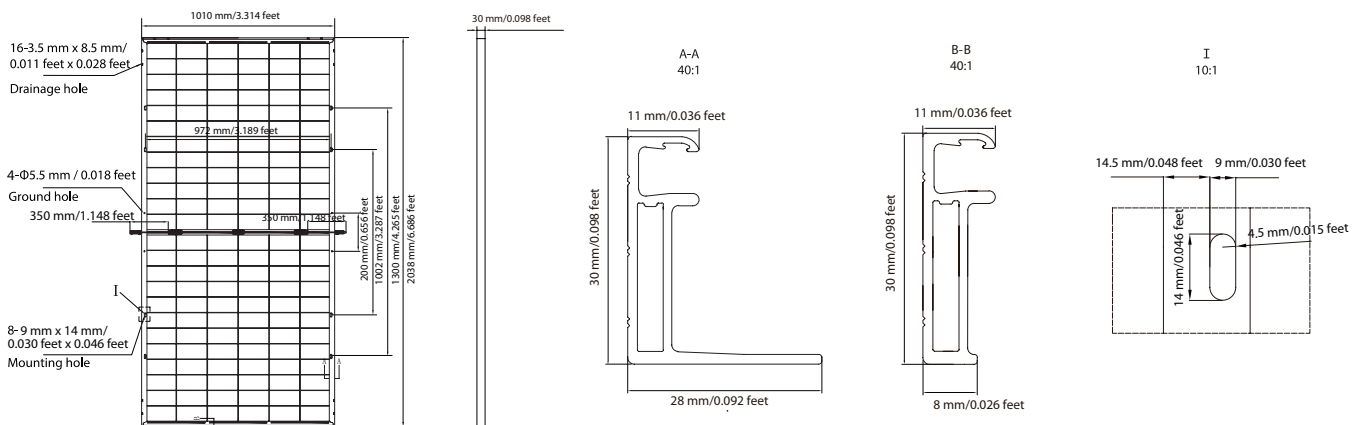
① Refer to Astronergy crystalline installation manual or contact technical department.
Maximum Mechanical Test Load=1.5×Maximum Mechanical Design Load.

PACKING SPECIFICATIONS

① Weight (module only)	31.4 kg / 69.23 lbs
② Packing unit	36 pcs / box
Weight of packing unit (for 40'HQ container)	1177 kg / 2595 lbs
Number of modules per 40'HQ container	792 pcs

① Tolerance +/- 1.0kg
② Subject to sales contract

MODULE DIMENSION DETAILS



© Chint Solar (Zhejiang) Co., Ltd. Reserves the right of final interpretation. please contact our company to use the latest version for contract.